

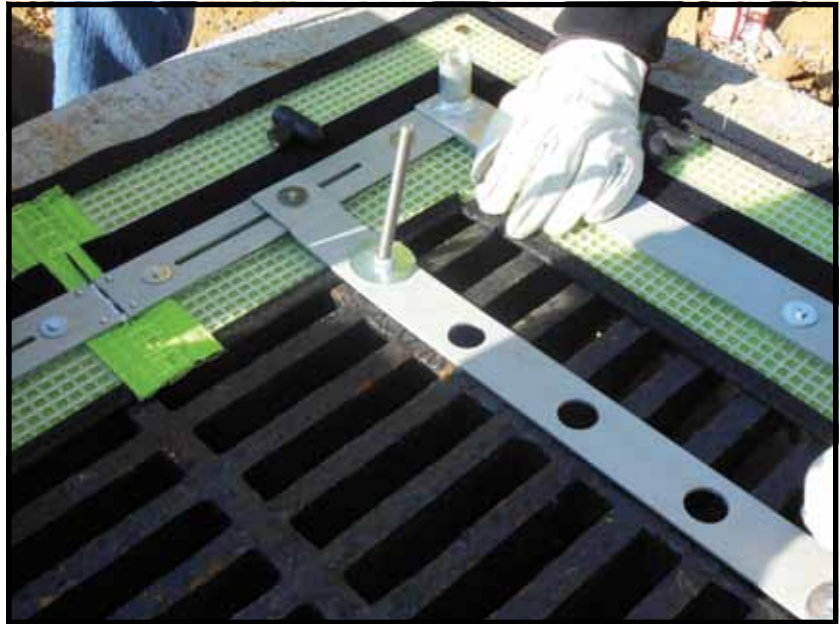
## South Carolina Road Project Manages Runoff

The South Carolina Department of Transportation (SCDOT) began a widening and rehabilitation construction project on Interstate 26 (I-26) during the summer of 2014. This project called for the widening of I-26 from four lanes to six lanes on a roughly 10-mile stretch running through Lexington and Calhoun counties. The rehabilitation portion of the project was taking place along the same 10-mile stretch; the project called for the repair of cracks, pot-holes and other damage to the road surface. Once the project is completed, it will improve the safety and increase the capacity for the estimated 59,000 vehicles that use this stretch of I-26 every day.

While under construction, there is a need to protect the current storm water system from any debris that could potentially wash into it from the road. After close examination of the surrounding area, it was determined that drop inlet protection would be the best method of defense from runoff water and debris. A decision was made that ACF Environmental's Grate Pyramid would be the best solution to protect the storm water management system along I-26.

The Grate Pyramid is a reusable inlet protection device that forms a sturdy barricade over most drop inlets. The high-flow filter skirt would prevent sediment and debris from entering the drain while still allowing water to pass through. The built-in overflow would prevent ponding during major wet-weather events that might take place during the construction phase of the widening and rehabilitation project. The easy installation of the Grate Pyramid would prove to be a cost-effective option to SCDOT over the typical wood frame and fabric units, and the pyramid could be reused in future SCDOT projects.

With no drainage work being performed during the project, the Grate Pyramids were installed prior to the



construction. An inspection on all pyramids on this project is conducted weekly; they are cleaned of any sediment that has built up to ensure they are draining properly.

The widening and rehabilitation project is projected to be complete by August 2015.

**ACF Environmental**  
800.448.3636 • [www.acfenvironmental.com](http://www.acfenvironmental.com)  
Write in 801